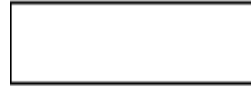
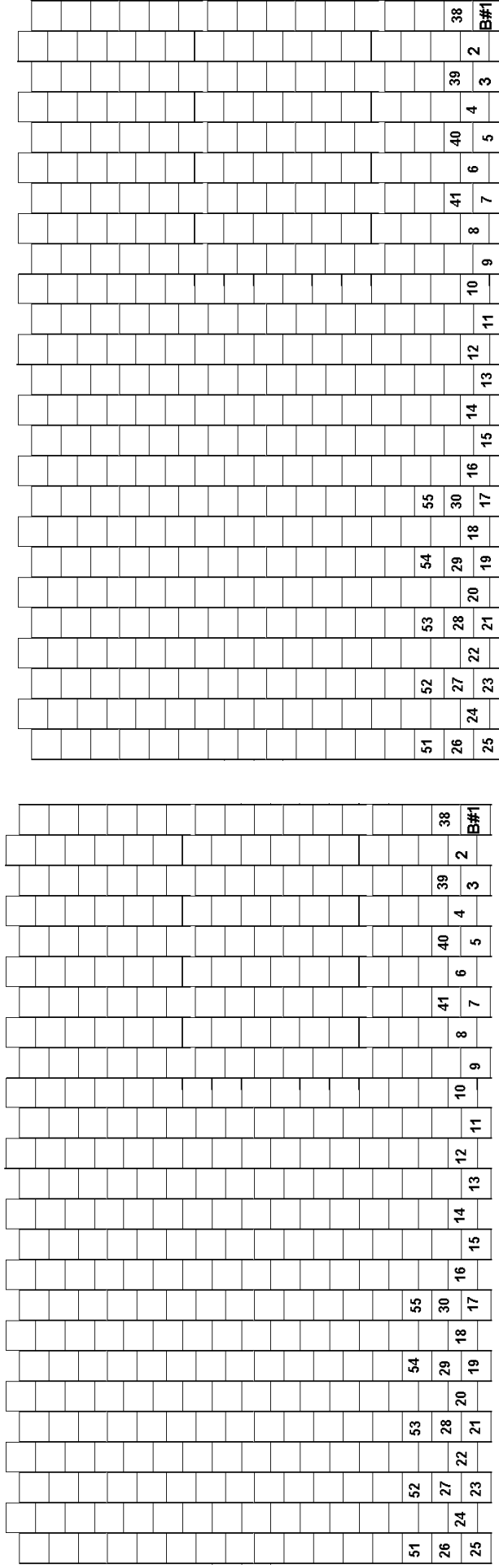


Mini Detachable Twist Pen *Guideline* Graph Paper **For Delica(r) beads, size 11/0** Odd Count Flat Peyote Stitch (For Top section: String on 25 beads, go 32 rows to fit around. For Bottom section: same as top. <http://www.artcraftworld.com>



Designing in the Round - Even though the above graph is a 'bead rectangle', since you are making a 'bead tube' out of it, a person can only view a small portion of your design at any one time. The blank rectangle to the left (including the black lines) shows the 'view' available of your finished bead design for the mini Detachable Necklace Pen. Also keep in mind that as your design approaches the left and right edges of the rectangle at left, the design begins to curve around the brass tube, and the appearance of the design diminishes.