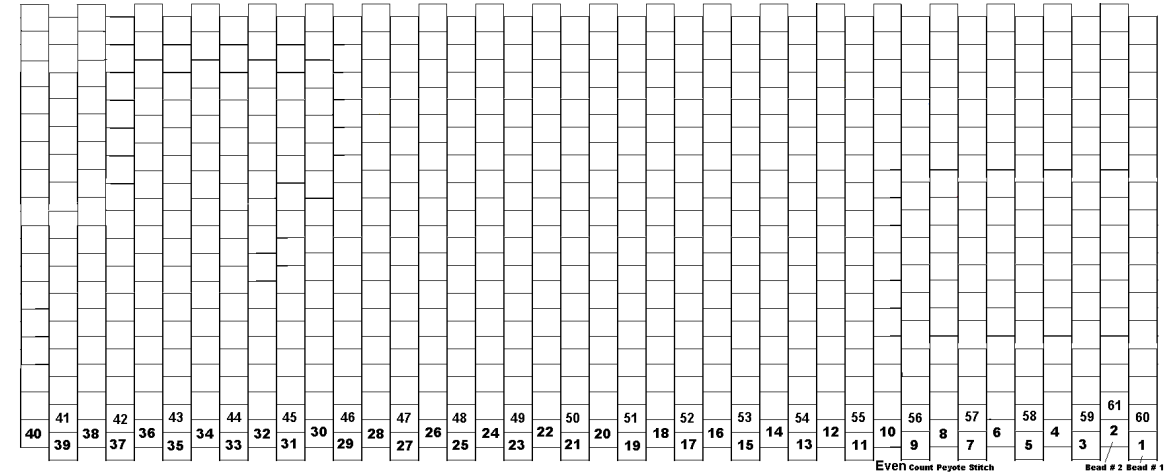
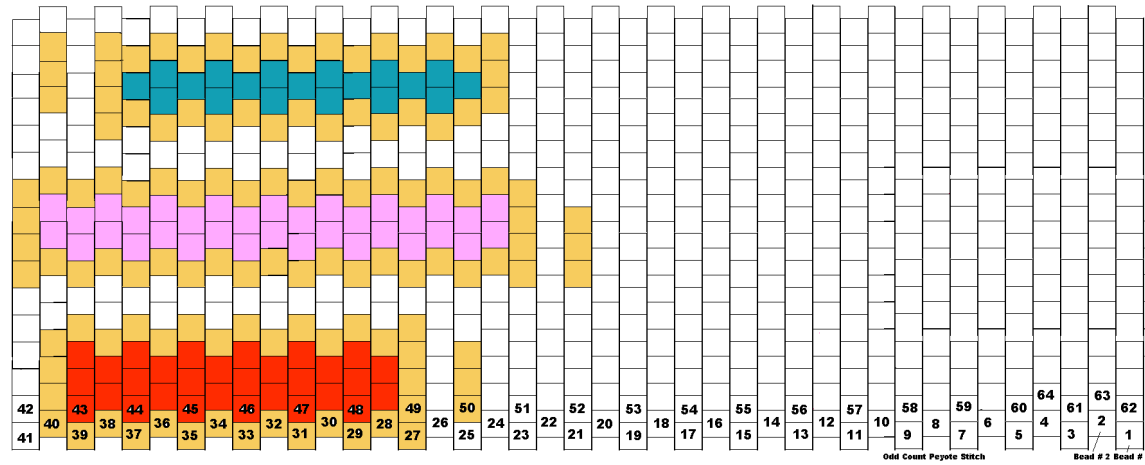


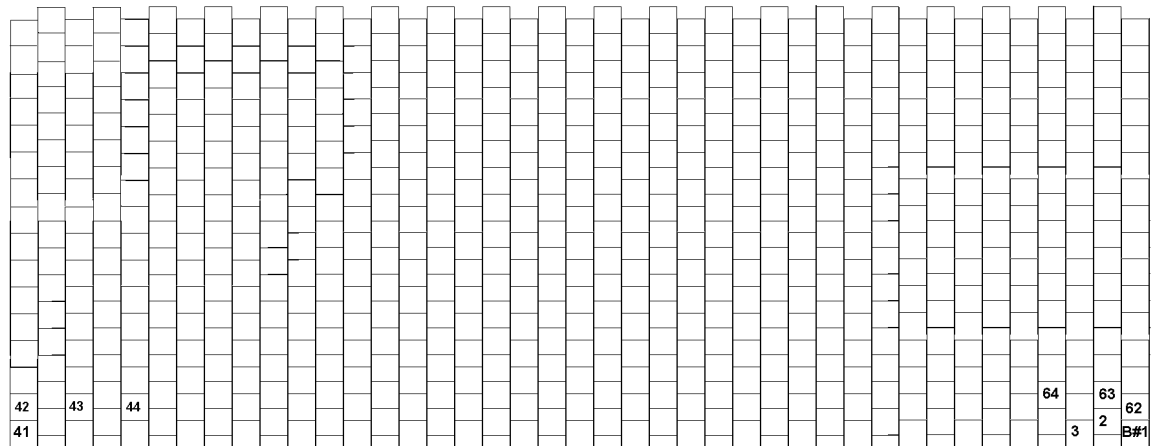
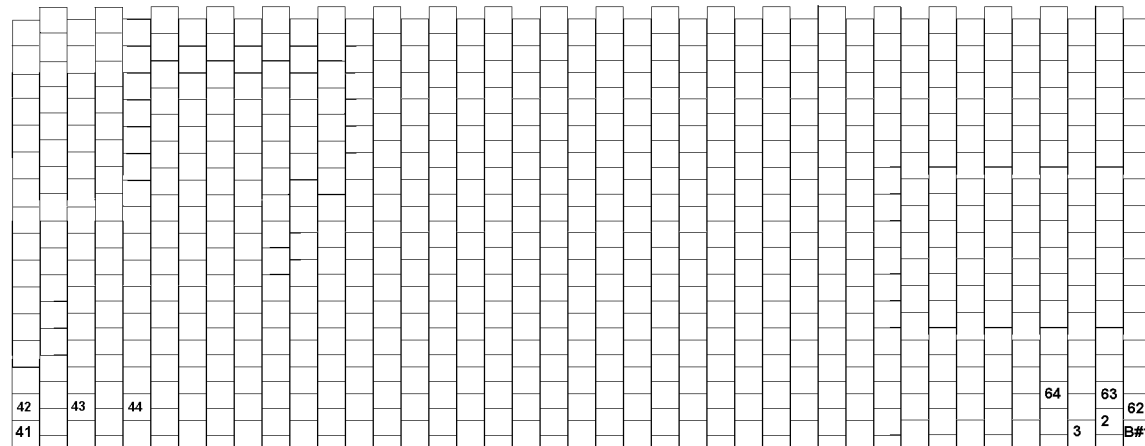
Twist Ballpoint Pen Guideline blank graph paper for **Delica®**, **Aikos®**, or **Treasure®** beads, size **11/0**

Depending on which bead you use, and the tension you bead at, you may need to string on 40 or 41 beads. Use a test strip of your own beading to find out, (at least three rows of peyote).

Even Count Flat Peyote, both sections, string on 40 beads, 32 rows to fit around.



Odd Count Flat Peyote, both sections, string on 41 beads, 32 rows to fit around.



- DB10
- DB149
- DB683
- DB1345



Designing in the Round - Even though the above graph is a bead rectangle, since you are making a bead tube out of it, a person can only view a small portion of your design at any one time. The rectangles below (including the black lines) shows the view available of your finished bead design for the Twist Pen. Also keep in mind that as your design approaches the left and right edges of the rectangle, the design begins to curve around the brass tube, and the appearance of the design diminishes.