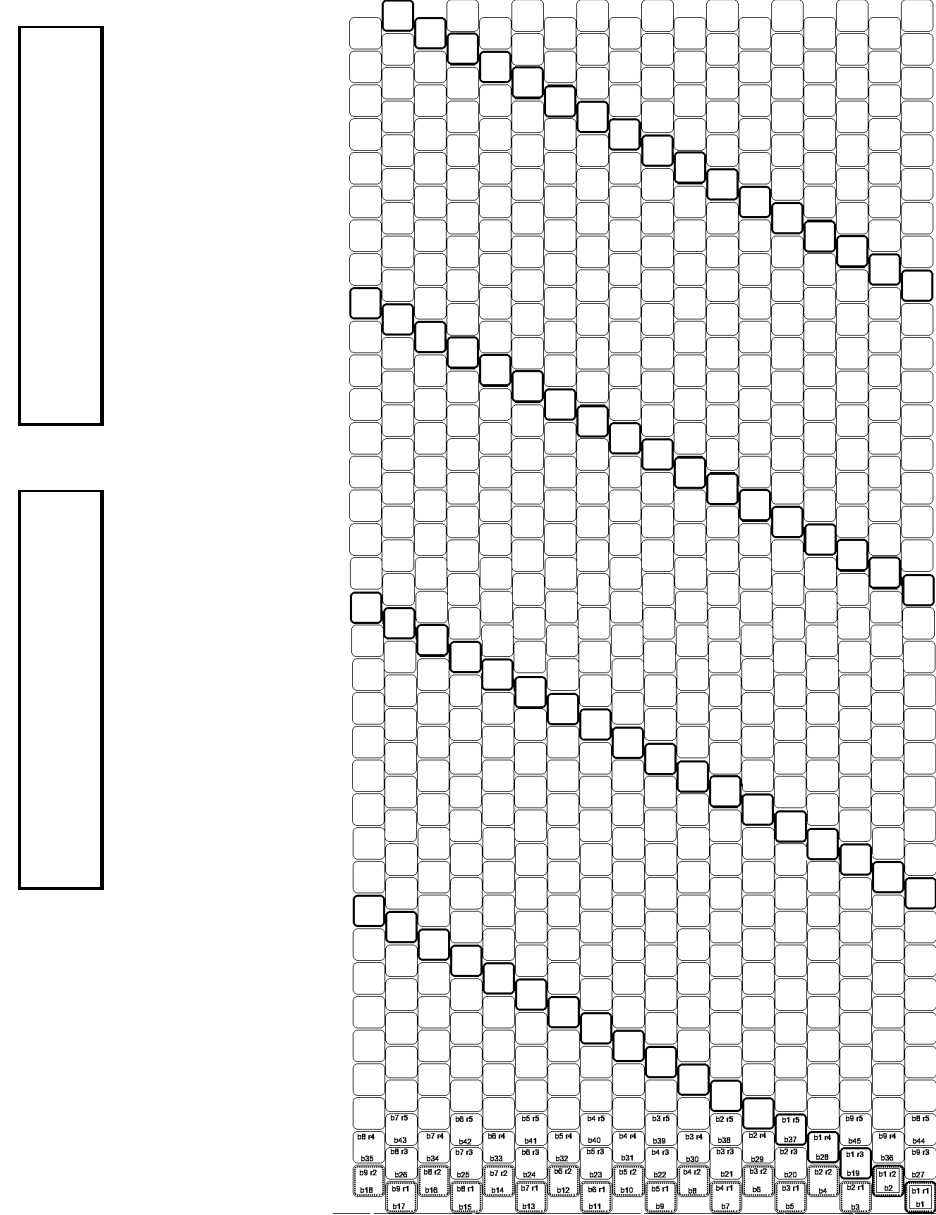


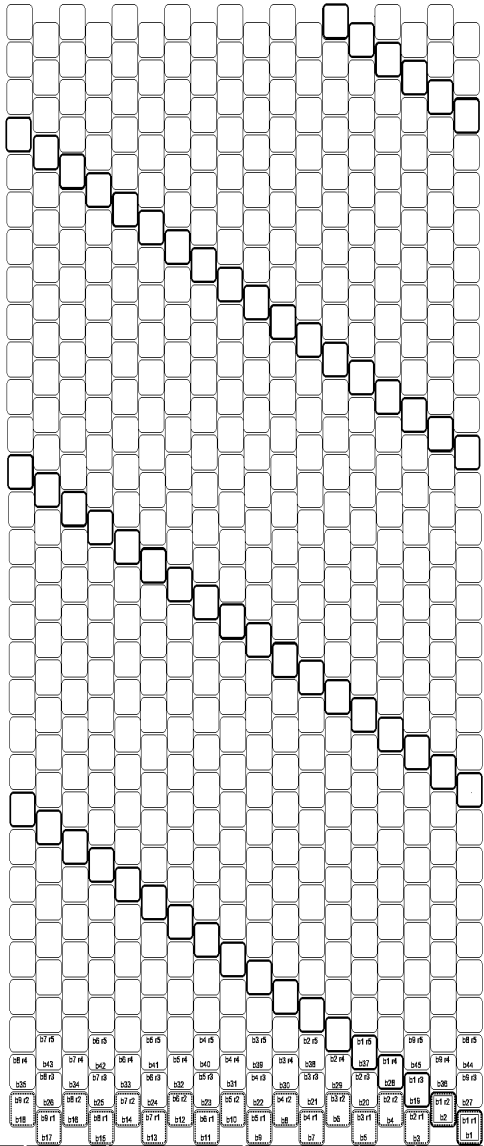
**Twist Ballpoint Pen - Guideline graph paper for Delicas®, Aikos®, or Treasure® beads, size 11/0**

Depending on which bead you use, and the tension you bead at, you may need to do 59 or 60 rows.

Tubular Even Count Peyote, Each section: string on 18, **do 59** rows.



Tubular Even Count Peyote, Each section: string on 18, **do 60** rows.



Designing in the Round - Even though the below graph is a bead rectangle since you are making a 'bead tube' out of it, a person can only view a small portion of your design at any one time. The blank rectangle to the left (including the black lines) shows the view available of your finished bead design for the Twist Pen. Also keep in mind that as your design approaches the left and right edges of the rectangle at left, the design begins to curve around the brass tube, and the appearance of the design diminishes. <http://www.artcraftworld.com/beads.htm>